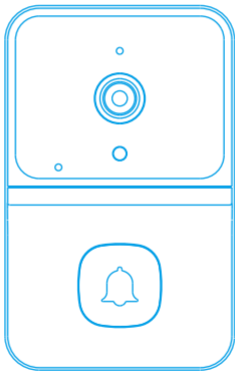


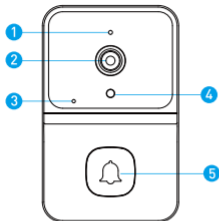
Doorbell

Get alerts and capture images of every visitor

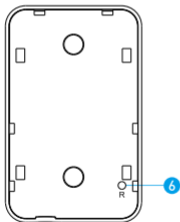


User Manual 1.0

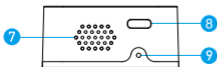
Features



1. Microphone
2. Wide-angle Lens
3. LED indicator
4. Light Sensor
5. Doorbell Button

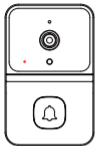


6. Reset Button



7. Speaker
8. Type-C Port(Battery Charging)
9. Security screw hole

Indicator Light



Flashing RED



The device is disconnected to WiFi. It will reconnect automatically. But if it failed, please reset the device and pair again in App.



Flashing RED and BLUE alternately



Low battery. Please recharge the device.



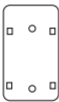
Flashing BLUE

The device is capturing images.

In the box



Doorbell



Tape



Chime
(Optional)



USB Cable
(Optional)



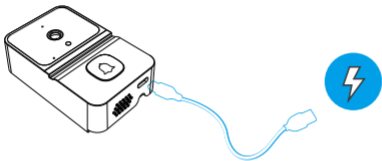
3 Screws



2 Anchors

Charge the Doorbell

Fully charge the doorbell by a 5V1A USB charger and a Type-C USB cable. It takes about 10 hours to fully charge.



WARNING: Lots of events

If you have excessive number of visitors, you might need to charge it sooner.

Set up your Doorbell

Before You Start

1. Download and install Kement App.

Scan the QR code below or search for Kement on the App Store or Google Play. Download and install the app.



Kement

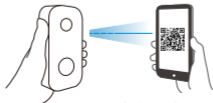


Android / iOS App Download

Set up your device in the Kement app.

To pair your device, follow the steps below and in-app instructions.

1. Open Kement App and log in to your account.
2. Tap the "+" icon to add new device.
3. Select Video Doorbell, then choose your doorbell model.
4. Press and hold the Doorbell Button until the red light is flashing, tap Next, then tap Yes.
5. Enter your 2.4GHz Wi-Fi network and the Wi-Fi password, then tap Next (5GHz is not supported).
6. Use your device camera to scan the QR Code

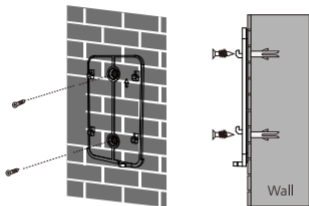


4 inches (10 cm)

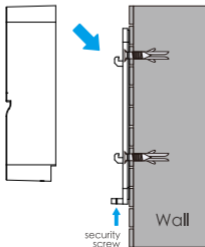
Install your Doorbell

Mark drill holes and use a bit to drill holes in your wall. Insert anchors and secure your doorbell with mounting and security screws.

Step 1



Step 2





Frequently asked questions

* You can always ask questions in Customer Service in Kement App. The service is free.

How to RESET the doorbell


To reset, please delete your current device, press and hold the Doorbell Button for around 8 seconds till it flashes red. Then click "+" icon in app, to add device again.

How to share the device with my family


Open Kement App. Tap Settings () icon, then tap Share () icon to get to Sharing Device page. In Sharing Device page, you can share the device via email or QR code scanning, and you can also transfer device.

The new user has to download Kement App and create his/her own account first.

Share via QR Code:

- Tap the Share via QR Code icon (), it will show a QR code on your phone.
- Open the Kement on new user' s phone, tap "+" icon, then tap the Scan icon at the top right corner, scan the QR code.
- You will see Share Successfully. And the new user will see the shared device in his/her own account.

Share via email:

- Tap the Share via Email icon (), then enter the new user' s email address.
- Tap confirm. You will see Share Successfully. And the new user will see the shared device in his/her own account.

Transfer device:

- Tap the Transfer icon(👤➡️), then enter the new users email address. Or, if you want to transfer device to your shared accounts, just choose the shared account.
- Tap confirm. Then transfer successfully.

Notes:

Only the owner account can change settings, delete videos, and share device. Shared accounts don't have these options.

[How many users can view the doorbell at the same time?](#)

The owner account can share to 8 other accounts. Up to 3 users may view the video feed at one time, but only 1 user can use the intercom.

[Is the 5GHz Wi-Fi supported?](#)

No, it only works with 2.4GHz Wi-Fi.

[Why is my Wi-Fi signal poor?](#)

Your device may be too far away from your wireless router or you may have some obstructions in between that reduce signal strength. You might try repositioning your router or getting a signal extender/repeater for your wireless router.

[Why is my device offline?](#)

Offline means device is disconnected. There are usually two possible reasons:

1. Device has run out of power.

Please try push the doorbell button, and see if there is light on doorbell. If no, please charge the doorbell.

2. Wi-Fi was weak and the device disconnected from Wi-Fi. Please reconnect to Wi-Fi. The device works with 2.4G Wi-Fi only, please make sure your Wi-Fi is stable, and consider reposition your router to make stronger Wi-Fi for the device. It is very important that the device gets good Wi-Fi, because it is outside of house.

How to enable Notifications on my phone

There are notifications settings inside **Kement** App, and in mobile settings:

1. Open **Kement** App. From Device page, tap Settings icon, you will see "Ring Alert". You can choose to turn on/off ring alerts.
2. Open mobile settings, find App Management and/or Notification Settings, then find **Kement** App. Make sure all authorizations and notifications are turned on for **Kement** App.

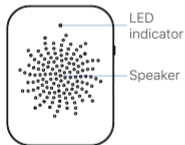
Set up your Wireless Chime (Optional)

Connect the doorbell to the doorbell chime, and get instant alert in your home when someone rings the doorbell. The chime plugs into any 5V USB port, you can place it anywhere in the home.

NOTICE:

The doorbell is only compatible with our wireless chime, and not compatible with traditional doorbell chimes. The wireless chime is optional. If it is not installed, doorbell notifications will still go directly to the Kement

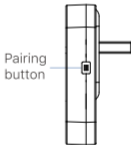
The Basics



Front



Back

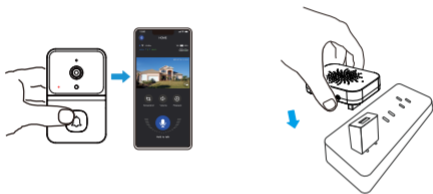


Side

Set up your Wireless Chime

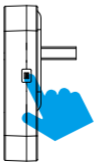
Step 1

Before the setup process, be sure your doorbell has connected to your phone. Then plug your chime in USB port.



Step 2

Press the pair button.



Set up your Wireless Chime

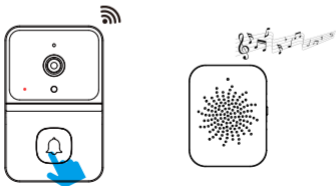
Step 3

Press the Doorbell Button for pairing.



Step 4

Press the Doorbell Button again to verify the chime and doorbell work properly.



* Volume of chime is not adjustable